

SaniForce®

Container Evacuation Solutions



Transfer thick materials, without dilution, from drum and bin containers

- SaniForce pump line is designed to efficiently evacuate low to high viscosity food, beverage and personal care products
- FDA-compliant, quick knock-down designs for applications requiring frequent sanitation
- 99% evacuation rate from most containers

SaniForce Solutions

Improve plant efficiency, safety and ergonomics

CONTAINER



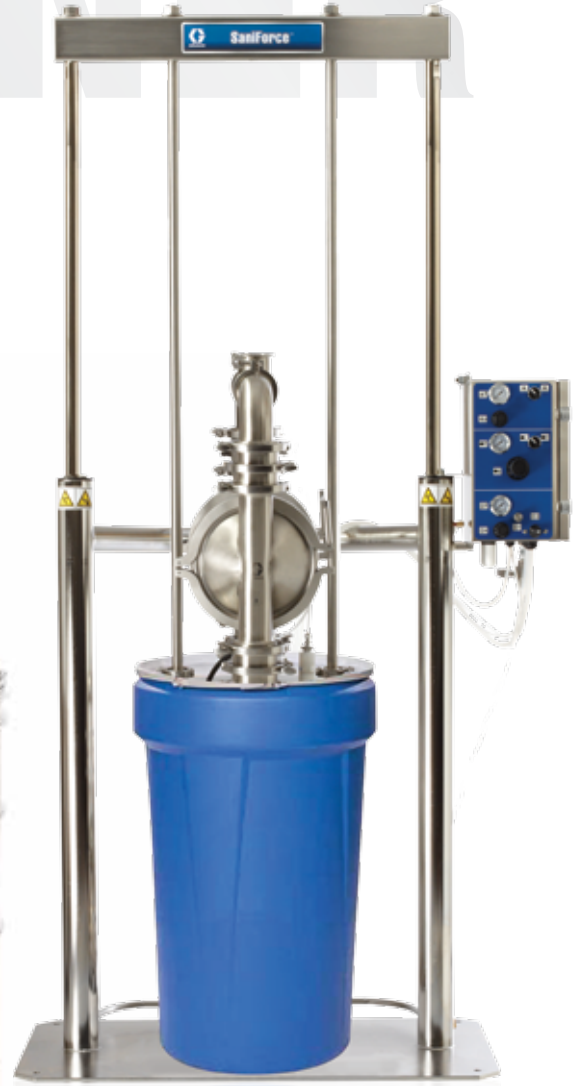
**SaniForce 515
FDA Diaphragm Pump
with Drum Kit**
up to 5,000 cps



**SaniForce 2:1
Piston Pump**
up to 50,000 cps



**SaniForce 6:1
Piston Pump**
up to 100,000 cps

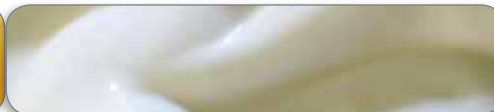


**SaniForce Diaphragm Pump
Drum Unloaders**
Available with SaniForce 2150
or 3150 HS Diaphragm Pumps
up to 100,000 cps

Typical Materials



Edible Oils



Flowable Lotion



Chocolate Syrup

thin

EVACUATION



SaniForce Piston Pump Drum Unloaders

Available with SaniForce 5:1,
6:1 or 12:1 Piston Pumps
up to 1,000,000 cps*

*When used with priming piston pump



SaniForce BES (Bin Evacuation Systems)

Available with SaniForce 5:1 or 6:1 Piston Pumps,
or SaniForce 3150 HS Diaphragm Pump
up to 1,000,000 cps*

*When used with priming piston pump



Ricotta Cheese



Tomato Paste



Peanut Butter

thick

SaniForce Line of Products



Air-Operated Double Diaphragm Pumps

- Maximum flow rates to 150 gpm (567 lpm)
- Tri-clamp connections
- Fluid pressure up to 120 psi (8.4 bar, 0.84 MPa)
- Durable, lube-free non-sticking air valve



High Sanitation Diaphragm Pumps

- Maximum flow rates to 150 gpm (567 lpm)
- Durable, lube-free non-sticking air valve
- Interchangeable flapper and ball checks



3A High Sanitation Diaphragm Pumps

- Maximum flow rates to 150 gpm (567 lpm)
- Fluid pressure up to 120 psi (8.4 bar, 0.84 MPa)
- Quick knockdown design for easy cleaning and draining
- Interchangeable flapper and ball checks
- Leak detection



Bin Evacuation Systems™ (BES)

- Evacuate materials from 300 gallon (1,135 l) containers without adding water
- Inflatable wiper seals for increased efficiency and faster change-out of bins
- Available with two sanitary diaphragm pumps or up to four sanitary piston pumps
- Pneumatic or electronic control options



Piston Pumps

- Fluid transfer and supply of low to medium viscosity fluids
- Flow rates ranging from 1.5 to 14 gpm (5.7 to 53 lpm)
- Double-ball and priming piston designs



Drum Unloaders

- Unload materials from straight-sided or tapered drums
- Inflatable wiper seals for increased efficiency and faster change-out of drums
- Liner guard to prevent bags from entering pump
- Sanitary flange clamps for quick disassembly

All written and visual data contained in this document are based on the latest product information available at the time of publication. Graco reserves the right to make changes at any time without notice.

Call today for product information or to request a demonstration.

877.84GRACO (1-877-844-7226) or visit us at www.graco.com.

©2013 Graco Inc. Form No. 345028 Rev. A 6/13 Printed in the U.S.A.

All other brand names or marks are used for identification purposes and are trademarks of their respective owners.

